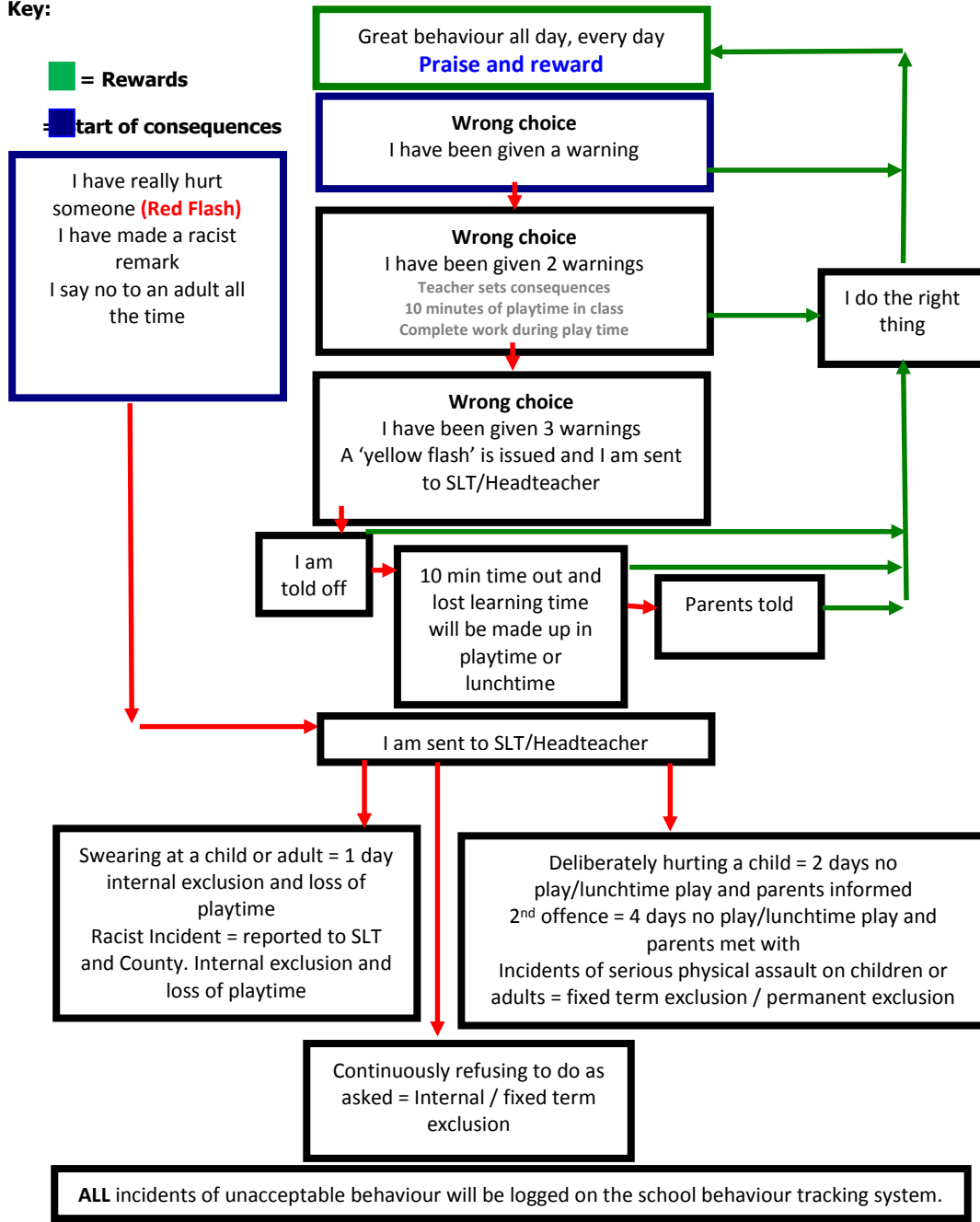


Key:

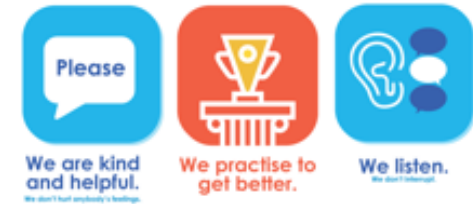
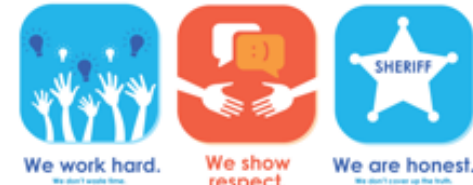
■ = Rewards

■ = Start of consequences



Behaviour Policy

Mill Primary Rules



We have remembered our capital letters and full stops. Have you?



A guide to our behaviour policy

Introduction:

Every child has the right to feel safe at school, physically, psychologically and emotionally, to enable them to learn effectively. No child has the right to disrupt the learning of others.

Everyone at The Mill Primary Academy strives to meet the high standards of behaviour expected of them every day. Parents, teachers and support staff work hard with pupils to praise and reward the good decisions they make to help pupils recognise the positive feelings they experience when they choose to do the right thing.

The communication of our school rewards and sanctions, including the events that may lead up to their use, is vital in ensuring that children receive the same messages from home and school. This leaflet has been designed to help outline the school's 'Behaviour Policy' and indicate how the school systems work fairly for each and every pupil.

Praise and rewards:

Everything we do in school is based around praise and rewards. From bringing in their book bag or completing a fantastic piece of work to making the right choice when a problem or decision comes their way, our pupils are congratulated for doing the right thing.

Examples of praise and rewards are as follows:

- Verbal praise – Somebody saying, "Well done, you did that really well!"
- Written praise – Marking in books, stamps, etc
- Class based rewards – stickers, marble jars etc
- Rewards from other adults – stickers, golden tickets, certificates
- House Points – awarded for above and beyond moments
- Head teacher's stickers – a special sticker for a special reason
- Star of the Week Certificate – awarded weekly during a celebration assembly

Consequences:

As in all areas of learning pupils do make mistakes; this is how we all learn the difference between right and wrong. Our school systems are designed to help children rectify these mistakes quickly and efficiently.

Our staff work in a positive way to remind children of the high standards at The Mill. If a child does make the wrong choice they work with the child to help them understand the choice they made and what behaviour would be desirable in the future. (see Mill Primary Rules poster)

A copy of the complete Rewards and Consequences process is included on the last page of this leaflet. Please take some time to familiarise yourself with the process. You will note that at any stage during the process, a pupil may always find a way back to 'Praise and Reward' (except in circumstances of extreme behaviour).

In some cases a child's decision may be more serious and on these occasions pupils may need to discuss their actions with the Head teacher or a member of the Senior

Date: January 2016

Management Team (SMT) straight away. The behaviour choices leading to this action, and the resulting sanctions, are detailed on the flowchart overleaf. Persistent 'serious' behaviour or single instances of extreme behaviour may lead to a permanent exclusion. All sanctions including fixed and permanent exclusions, and steps through the sanctions, are undertaken at the Head teacher's discretion and after careful consideration.

Bullying:

Bullying is defined by the Department for Education as:

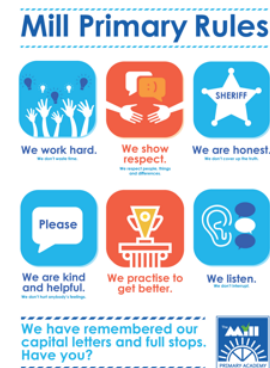
"behaviour by an individual or group, repeated over time, that intentionally hurts another individual or group either physically or emotionally"

Bullying will not be tolerated at The Mill Primary Academy and instances of bullying behaviour will be dealt with seriously by the Head teacher. The points below detail the progressive sanctions that will be followed, where the circumstances allow, if there are any incidents of bullying.

1. At the first instance of bullying there will be a 1 day internal exclusion (in school)
2. If bullying continues there will be a 1 day fixed term exclusion (at home)
3. If bullying continues there is likely to be a permanent exclusion

Alongside these sanctions the school will also work with individuals to ensure that they understand the consequences of bullying, the impact on others and alternative ways to manage emotions which may lead to episodes of bullying behaviour, including cyber-bullying. Please refer to our "Friendship and Anti-bullying policy for parents" for more details

The Mill Primary Rules are the rules that we share with children and refer to.



Review: January 2017

ML